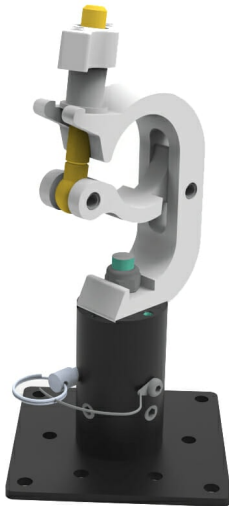


ROKSY ROTATION KITE SYSTEM, TRUSS HOOKING SYSTEM

SKU: 22100



Material	Iron – Aluminum
Color	Silver, Black
Treatments	Powder coated
clamp fixing to truss	Ø 48 – 51 mm
SWL (SAFE WORKLOAD)	250 Kg (each Clamp)
clamp fixing screw	M12
standard attachment	YES
Dimension	120 x 120 _ 250 [mm]
packaging	140 x 140 _ h270 [mm]

Categories: [Flat Panel Mounts](#), [Matrix](#)

It is a rotating device made up of 2 male/female components.

The male is anchored to the support to hang, while the female to the trellis (by means of the single Clamp) at this point they are coupled with a safety pin, the support is rotated to the desired angle and everything is blocked with extreme ease and speed .

The Clamp is compatible with the main Ø50 mm trusses and has a hold of 250kg.

Having the usual standard attachment, it is also compatible with other options or supports that have this attachment, thus making it modular with other EUROMET products.

Compatibility: All EUROMET products with standard connection

Certification IMQ: EN 62368-1:2014+A11:2017 clause 8.7

[OFFER REQUEST](#)

×

OFFER REQUEST

Nome *

Cognome *

Azienda *

Email *

Messaggio *

☐ Ho letto l'informativa sulla Privacy Policy e autorizzo il trattamento dei dati personali (*)

[Leggi la nostra Privacy Policy](#)

Invia

×

GALLERY

