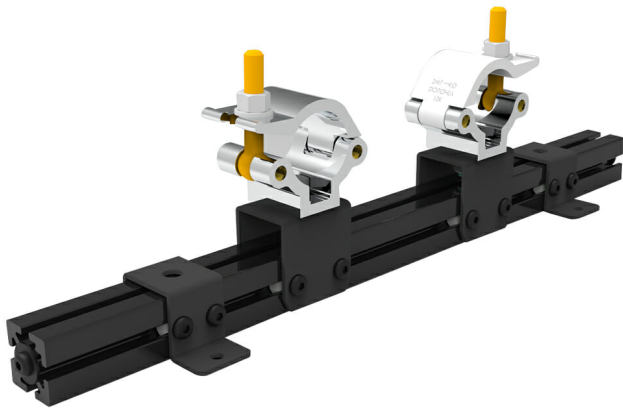


OPTIONAL UNIKA - ADDITIONAL PROFILE WITH 2 CLAMPS (PORTRAIT/FLOOR)

SKU: 19564



installation	Truss-mounted cage
Material	Iron – Aluminum
Color	Silver, Black
Treatments	Powder coated
clamp fixing to truss	48 – 51 mm
SWL (SAFE WORKLOAD)	500 Kg (each Clamp)
clamp fixing screw	M12

Categories: [Unika](#)

It is a universal accessory compatible with all UNIKA cages, it allows the installation of a TRUSS cage in PORTRAIT or FLOOR position, thanks to a system made up of a profile bar on which 2 Clamp are mounted. Both the bar and the Clamp can slide (thanks to a simple lock/unlock system), allowing them to be aligned (and the distance between them to be adjusted) in any installation situation.

The code corresponds to a single "profile bar + 2 Clamps" which can be used both individually and in pairs, based on the required stability and installation difficulty (only in FLOOR position, it is **mandatory** to use them in pairs).

The Clamps used (compatible with most Ø50mm truss types) has a 500kg load capacity for each Clamp and are equipped with a simplified locking system.

Compatible cages: all UNIKA cages

[REQUEST A QUOTE](#)

x

REQUEST A QUOTE

Nome *

Cognome *

Azienda *

Email *

Messaggio *

☐ Ho letto l'informativa sulla Privacy Policy e autorizzo il trattamento dei dati personali (*)

[Leggi la nostra Privacy Policy](#)

Invia

x

GALLERY

