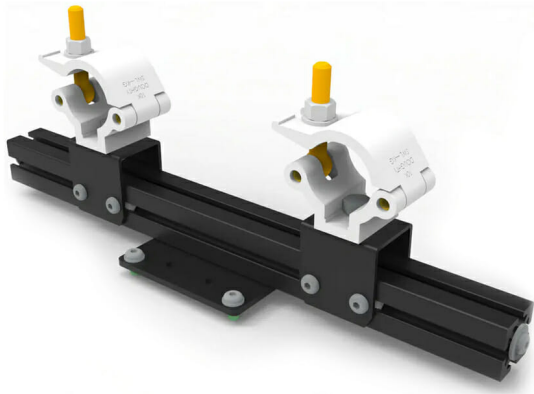


## UP-BAR, BAR WITH 2 SLIDING CLAMPS AND VESA 100X100

SKU: 23046



<b>installation</b>	Truss-mounted cage
<b>Mode</b>	Floor, Landscape, Portrait
<b>Material</b>	Iron – Aluminum
<b>Treatments</b>	Powder coated
<b>Color</b>	Silver, Black
<b>clamp fixing to truss</b>	48 – 51 mm
<b>SWL (SAFE WORKLOAD)</b>	500 Kg (each Clamp)
<b>buttonhole adjustment range</b>	Up to 400 mm
<b>clamp fixing screw</b>	M12
<b>standard attachment</b>	YES
<b>Dimension</b>	120 x 480 _ 170 [mm]
<b>packaging</b>	140 x 500 _ h190 [mm]

---

**Categories:** [Flat Panel Mounts](#), [Kalibro](#), [Matrix](#)

This accessory consists of a plate with standard Euromet fastening system and an aluminium profile for 2 clamps.

By fixing the plate to the cage and sliding the clamps along the profile, the required centre distance for fixing the system is easily achieved.

The Clamps used (compatible with the main Ø550 mm truss versions) have a 500kg weight capacity each, with fastening distance up to 400 mm.

**Compatibility:** all EUROMET products with standard connection

**Certification IMQ:** EN 62368-1:2014+A11:2017 clause 8.7

[QUOTATION REQUEST](#)

x

## REQUEST A QUOTATION

Name \*

Surname \*

Company \*

Email \*

Message

☐ I have read and accept the Privacy Policy (\*)

[Read our Privacy Policy](#)

Send

x

## GALLERY

