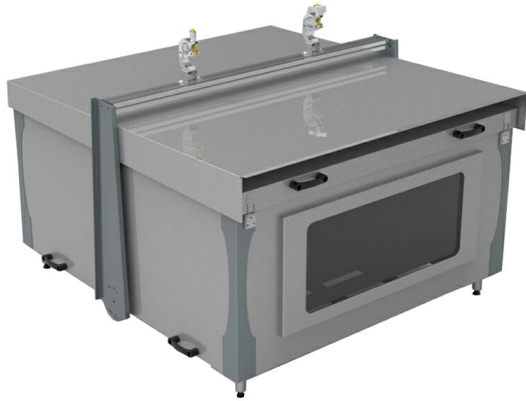


## KOMETA STANDARD - PROFESSIONAL PROJECTOR OUTDOOR CASE WITH HEATING AND COOLING SYSTEM

SKU: 24300



<b>Material</b>	Aluminium-Steel-Stainless-Glass
<b>Dimension</b>	829x995x406 mm
<b>Weight</b>	89 kg
<b>Color</b>	Grey
<b>glass</b>	Tempered+Termal

---

**Categories:** [Kometa](#), [Matrix](#)

The Kometa Storm Standard is a custom-made outdoor protective shell for professional projector and rental cage. This product completes the last link in the complete and integrated range of hanging solutions for this family of professional projectors, the heart of Euromet's business.

The innovative elements of this shell are:

- structure similar to the flight case that can be assembled and prepared directly in the warehouse and then transported with the cages and the projector ready to the place of destination
- possibility of installing both with cage and without cage
- the ease of stacking the machines directly with their own shell

STORM model means:

- heating system
- cooling systems

[RICHIEDI UN'OFFERTA](#)

×

## REQUEST AN OFFER

Nome \*

Cognome \*

Azienda \*

Email \*

Messaggio \*

☐ Ho letto l'informativa sulla Privacy Policy e autorizzo il trattamento dei dati personali (\*)

[Leggi la nostra Privacy Policy](#)

Invia

×

