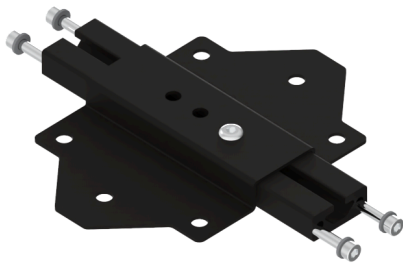


K BRIDGE PORTRAIT MATRIX BAR - NO CLAMPS

SKU: 25105



installation	Truss-mounted cage
Mode	Portrait
Material	Iron – Aluminum
Color	Silver, Black
Treatments	Powder coated
Connessione	100X100
SWL (SAFE WORKLOAD)	500 kg
clamp fixing screw	M12
packaging	595 x 110 _ 225 [mm]

Categories: [Advanced Kalibration Systems](#), [Matrix](#)

K Bridge Matrix portrait mode for M tilt.

- Matrix portrait bar for use directly with the M tilt system
- Allows an easy and perfect portrait projection with the M-Tilt calibration
- The bar allows easy connection to the cage while respecting the center of gravity
- The bar included the Exhagon accessory
- On demand could have also an omega stick where add an universal clamp.

[REQUEST AN OFFER](#)

x

REQUEST AN OFFER

Nome *

Cognome *

Azienda *

Email *

Messaggio *

☐ Ho letto l'informativa sulla Privacy Policy e autorizzo il trattamento dei dati personali (*)

[Leggi la nostra Privacy Policy](#)

Invia

x

GALLERY

