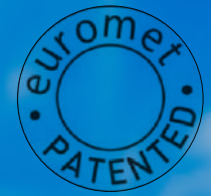




AV
AWARDS
FINALIST 2021

The logo for "kite" features a stylized lowercase "k" where the vertical stroke is a ruler with markings from 0 to 4. The letters "ite" are in a bold, sans-serif font. The entire logo is white against a blue background.

kite

Euromet's evolution for professional projection

Euromet's projector support lines such as: ARAKNO, KALIBRO, UNIKA, come full circle with KITE, the solution with a quick, precise and stable adjustment system with 3 calibration positions.

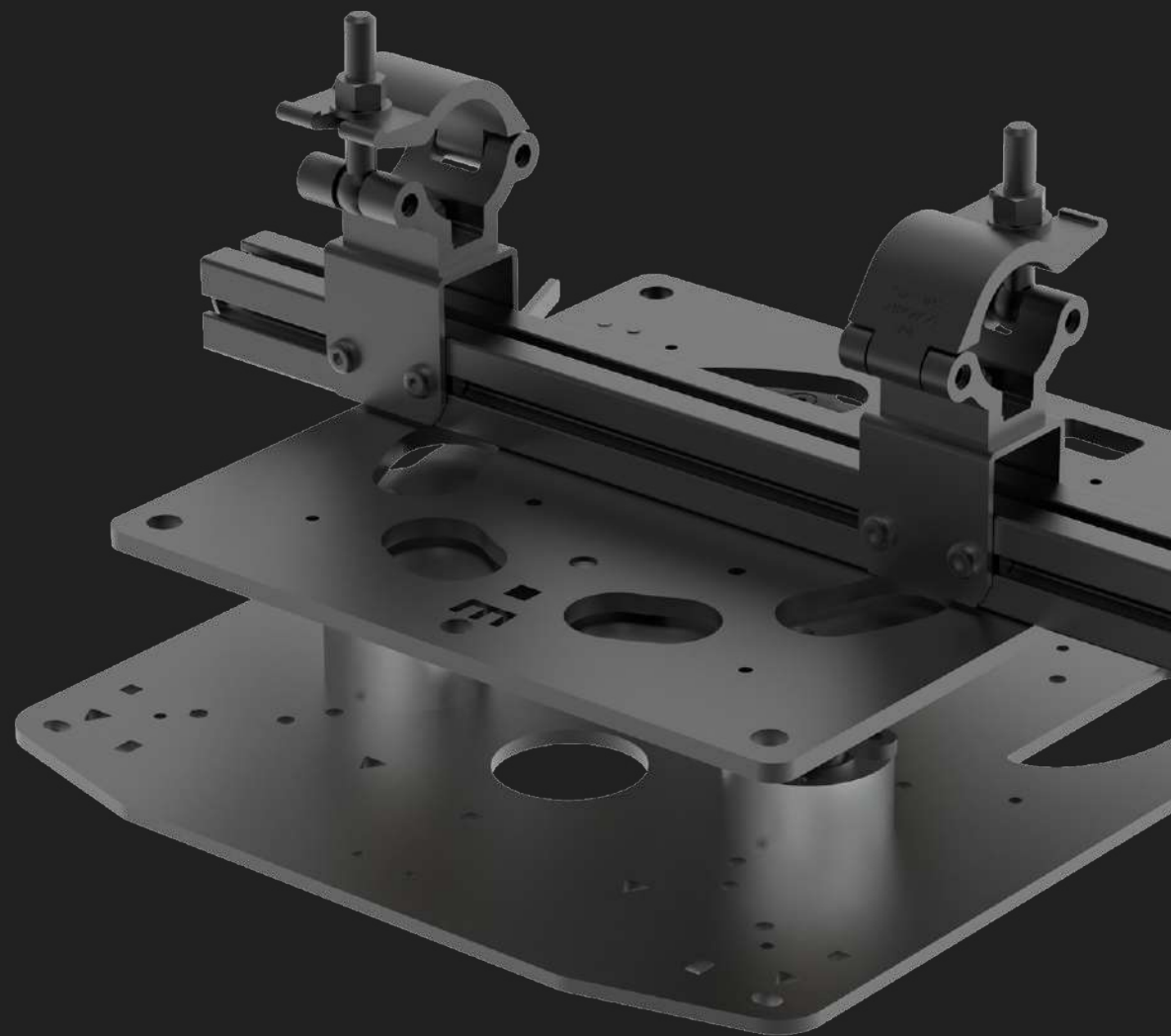
[Visit our website](#)

■ INNOVATION

KITE is a real innovation, designed to meet the latest market demands. It has a better weight distribution, greater stability and lower weight.

■ DESIGN

The **KITE** line fully represents our idea of design, combining **Made in Italy aesthetics**, **technological research** and over 40 years of **experience** in the field.



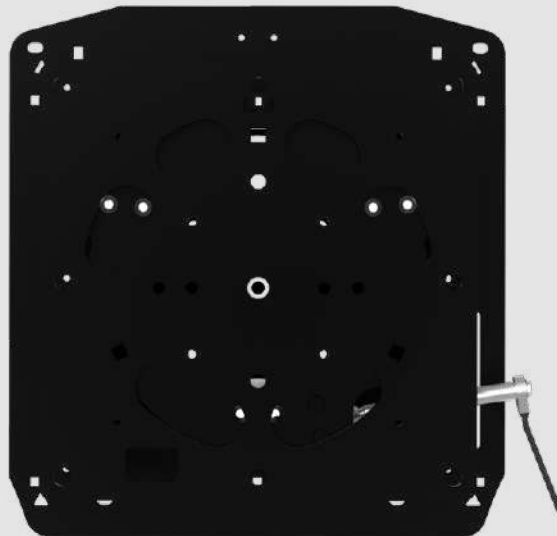
Three fastening points. **Extreme adaptability.**



- KITE is covered by an **exclusive** Euromet **patent** for an **innovative** professional projector **mount**.

- It offers the unique capability of **micrometric adjustment** on all three axes of rotation.

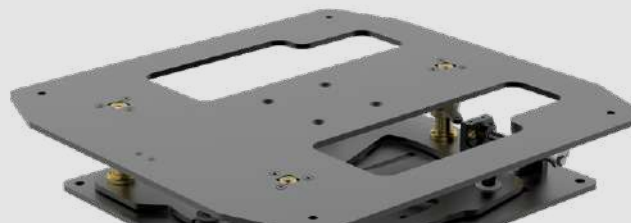
- It maintains a **stable and constant calibration** in a fixed position over time.



- Instead of a single central hinge, KITE has **three self-aligning fastening points**, thus making the system practical and intuitive.

- It adapts to **any situation** (even the most extreme) and makes the installer's work **quick and safe**.

- KITE meets **any installation requirement** in **any environment**, **optimising installation time**.



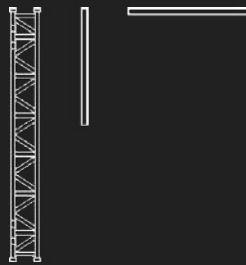


KITE application and accessories

Different applications, many accessories.

■ INSTALLATION

The KITE support system can be installed on truss, wall, ceiling.



■ PROJECTION

KITE supports landscape, portrait and floor projection.



■ ACCESSORIES

KITE has a wide range of telescopic extensions.



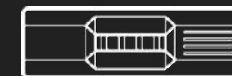
■ COMBINATIONS

Two or more projectors can be stacked together.



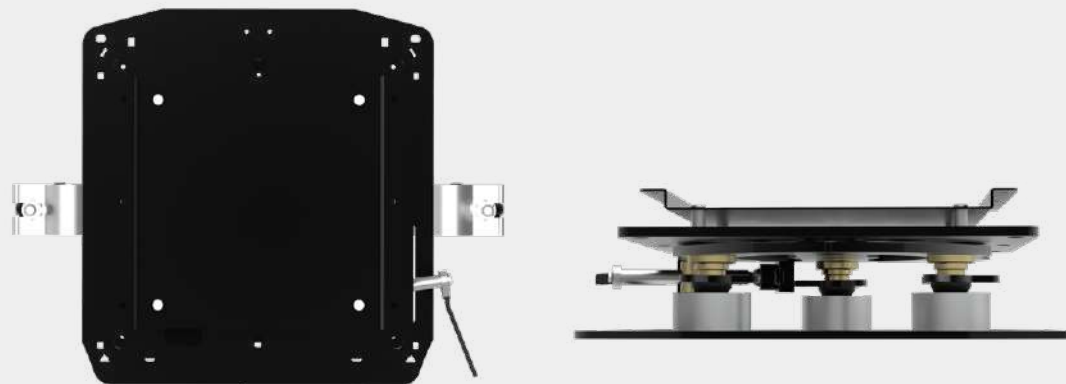
■ ADAPTABILITY

The new KITE bracket can be adapted to any brand of projector.



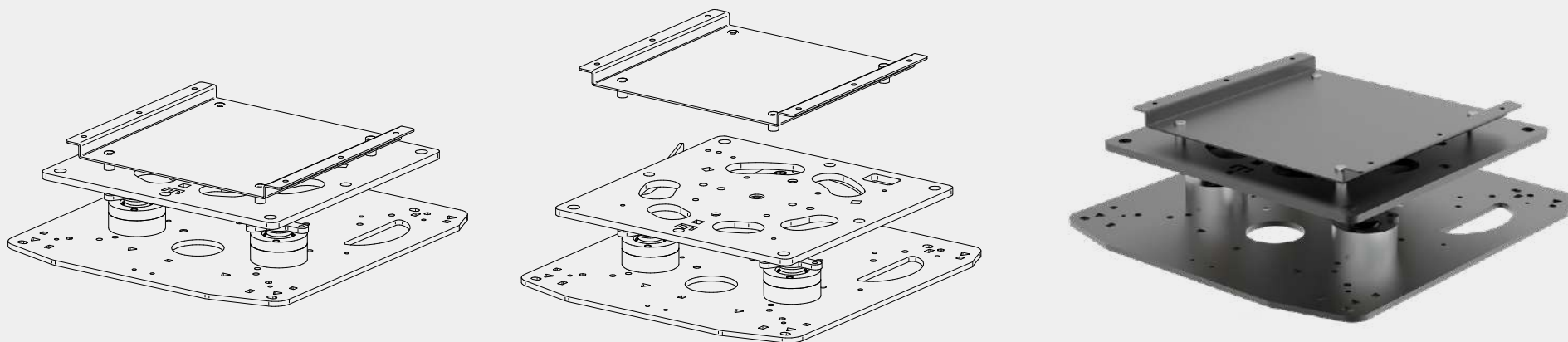
Accessories for the KITE range.

Ceiling plate with quick and safety connection.



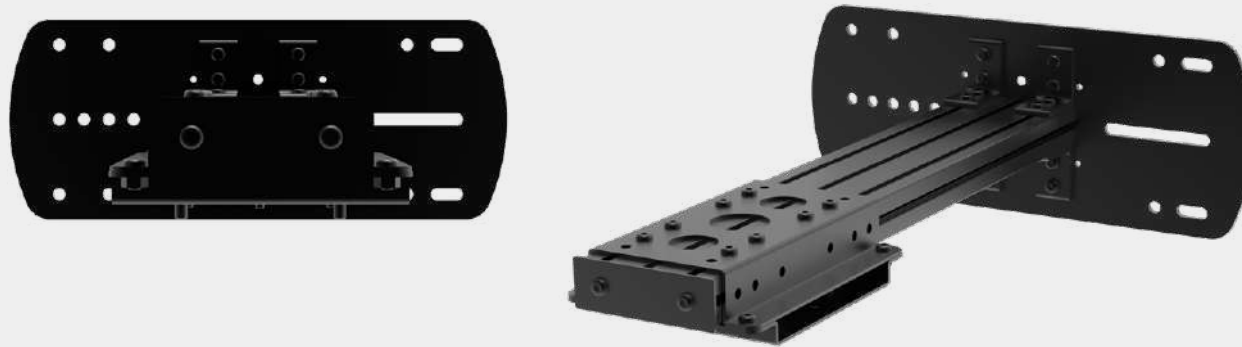
KITE CEILING

EUROMET CODE 26626

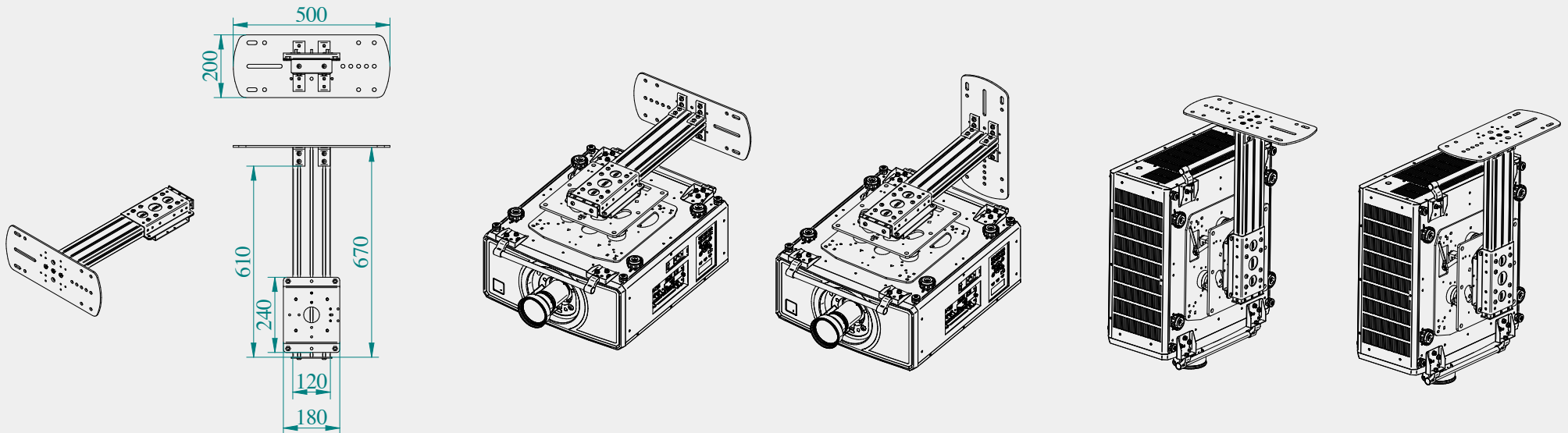


Accessories for the world of KITE.

It allows the projector to be installed in numerous configurations.

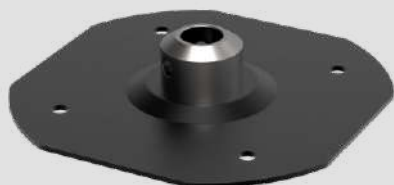
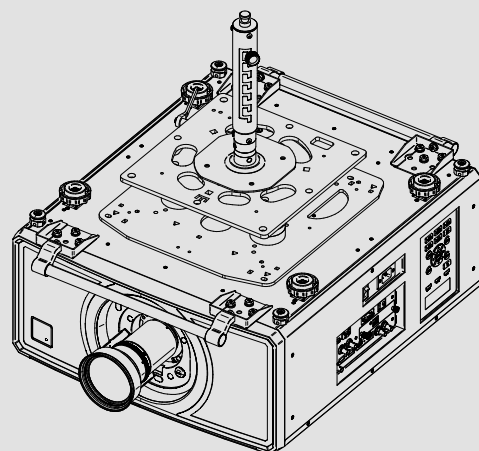
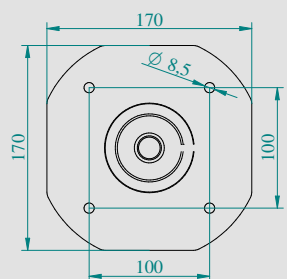


ARM BLACK
EUROMET CODE 21491



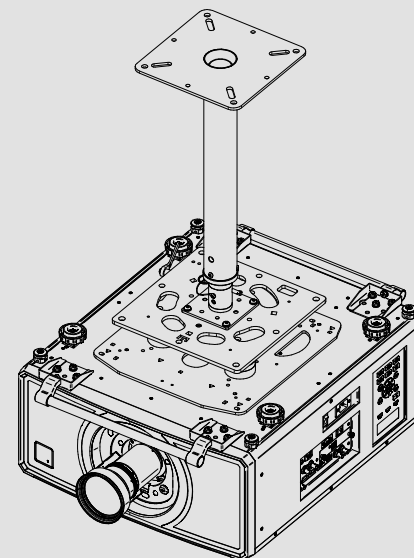
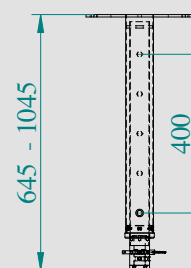
ARAKNO ADAPTER

EUROMET CODE 21300



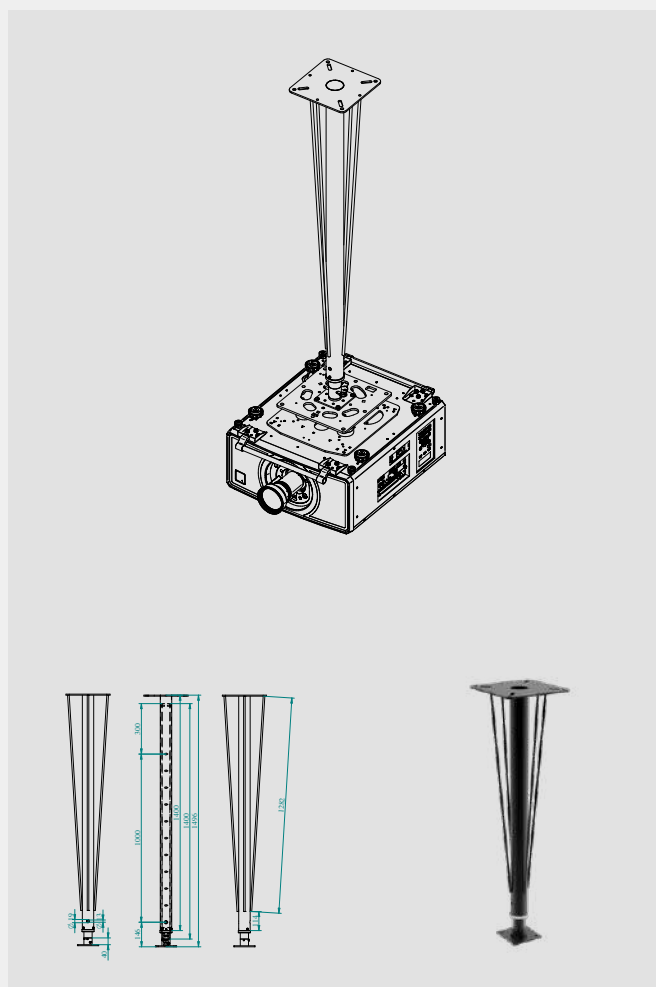
60/100 CM

EUROMET CODE 22333



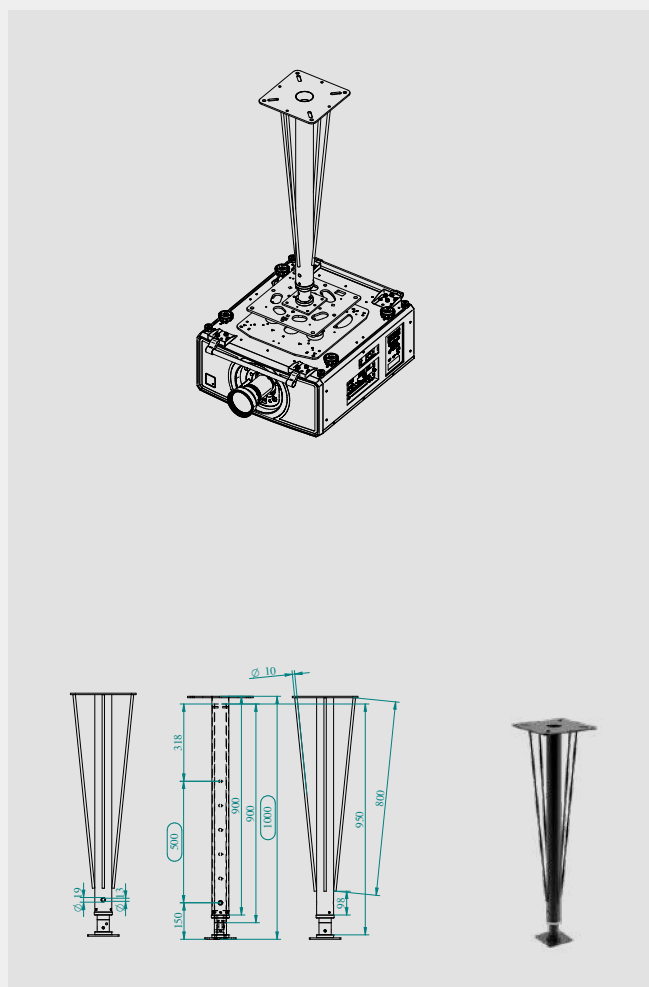
150/250 CM

EUROMET CODE 22184



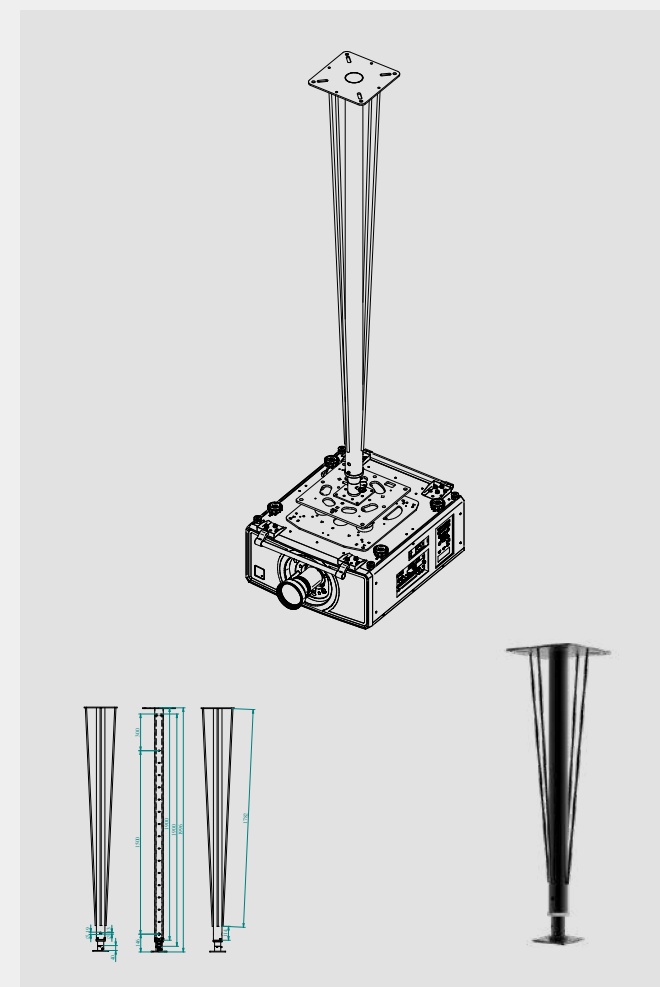
100/150 CM

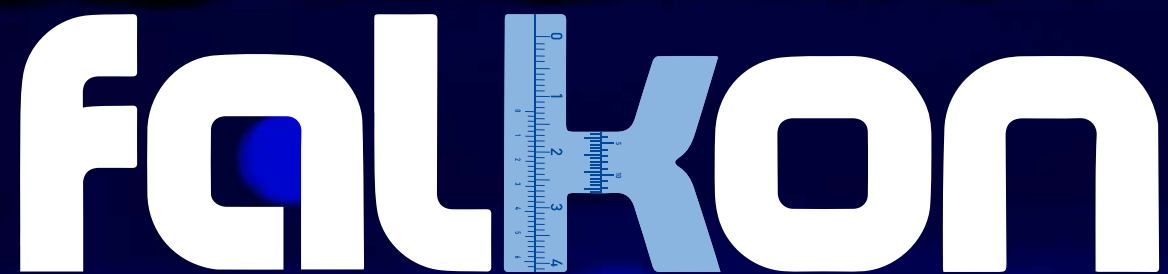
EUROMET CODE 22334



200/350 CM

EUROMET CODE 22154



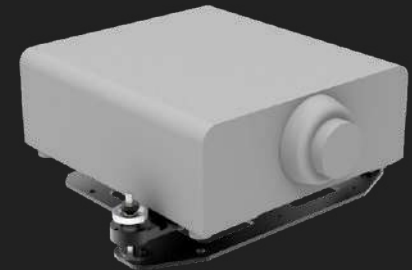
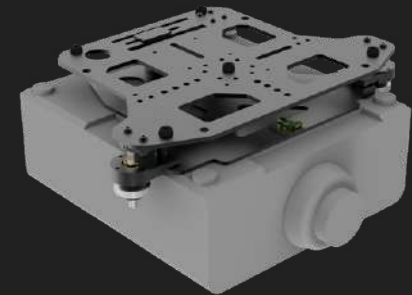
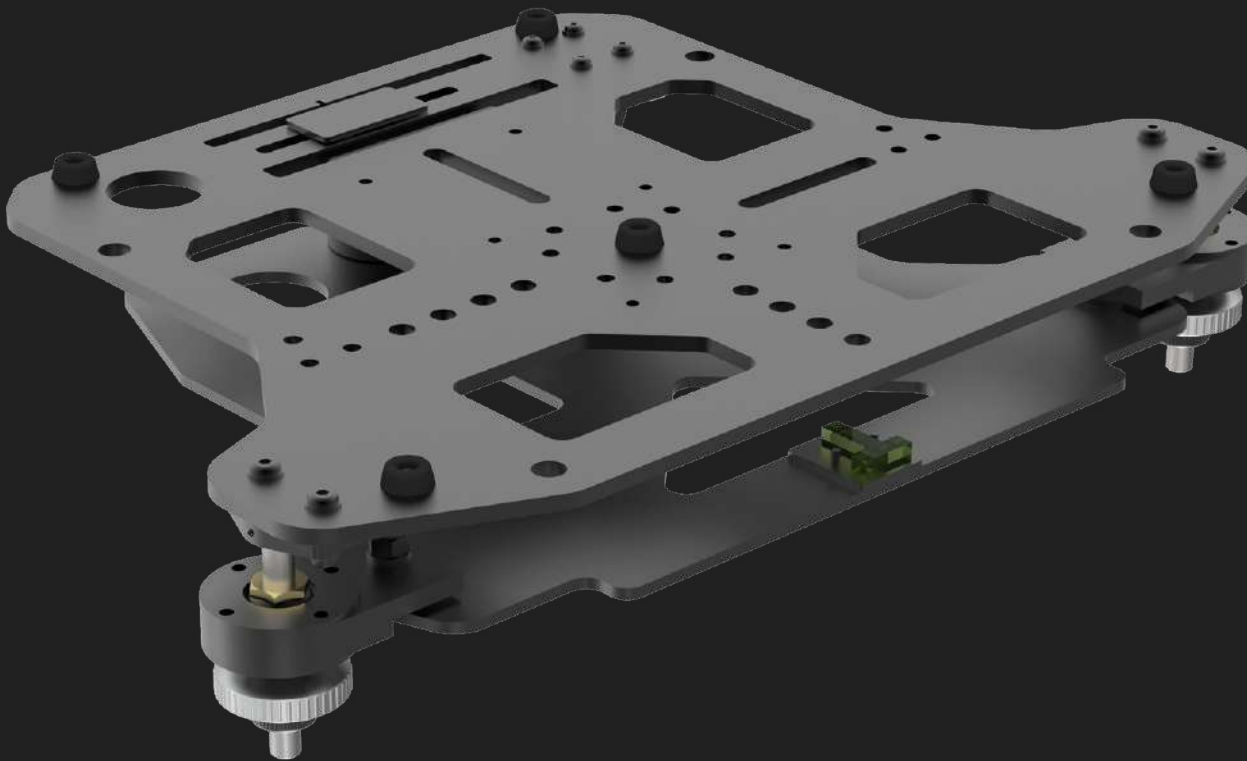
The logo for Falkon features the word "falkon" in a bold, white, sans-serif font. The letter "l" is replaced by a vertical ruler with markings from 0 to 4. The letter "k" is a light blue color, while the other letters are white. The background is a dark blue, textured surface that looks like a close-up of a material with some wear or a rough texture.

falkon

Large projector bracket

The ultra-slim for all projections.

Falkon fits large projectors and has a micrometrical calibration on three axes, plus three adjustment points. It is **ultra-slim** and takes up minimal space between the projector, truss or ceiling support. It fits all projections: landscape, portrait and floor.





**Contact us for your project
or to receive a quotation**

Euromet Srl

Z. I. Brodolini, 40B
60025 – Loreto (AN)

Italy

Tel. +39 071976444

Fax +39 071978988

euromet.com