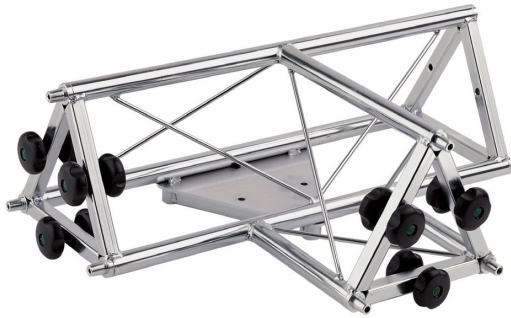


## TRIANGULAR TRUSS, 4 WAYS “T”-STYLE, MALE, STEEL, GALVANIZED

SKU: 01193



<b>Net weight</b>	4,70 Kg
<b>Closed Length</b>	650 mm
<b>Link with</b>	ø15,3 mm (F) – ø15 mm (M)
<b>Dim. M. attachment</b>	ø 15 mm
<b>Dim. F. attachment</b>	ø 15,3 mm
<b>Thickness</b>	1,5 mm
<b>Material</b>	Fe ø25 mm
<b>Treatments</b>	Galvanization

Categories: [Trusses](#)

Triangular galvanized truss, 4-way “T”-style, L:625mm/ D:425mm with 225mm sides, made of ø 25mm steel tube, reinforced with ø 6mm welded wire and a forth channel to fix column. This module is comprised on one side of three male ø 15mm attachments, on the other side of three female ø 15,3mm attachments and on the lateral channel three male ø 15mm attachments. Link with other modules by coupling of attachments and fixing with three supplied couples of M8x60mm knobs.

[QUOTATION REQUEST](#)

x

**REQUEST A QUOTATION**

Nome \*

Cognome \*

Azienda \*

Email \*

Messaggio \*

☐ Ho letto e accetto la Privacy Policy (\*)

[Leggi la nostra Privacy Policy](#)

Invia

x

## GALLERY

